

COPYRIGHT © WHEREIS® REGISTERED TRADEMARK OF SENSIS PTY LTD.

LOCALITY PLAN
NOT TO SCALE

SERVICES LEGEND

— E —	— E —	—	ABOVE GROUND ELECTRICAL SUPPLY
— FE —	— FE —	—	ABOVE GROUND FEEDER CABLES
- - - E - - -	- - - E - - -	- - -	BELOW GROUND ELECTRICAL SUPPLY
- - - FE - - -	- - - FE - - -	- - -	BELOW GROUND FEEDER CABLES
— T —	— T —	—	BELOW GROUND FIBRE CABLES

- NOTES:
1. ALL FEEDER ACCESS POINTS ON THE STRUCTURE MUST BE BIRD PROOFED AS PER EXTERNAL PLANT POLICY 003615.
 2. ALL DIMENSIONS ARE IN MILLIMETRES UNLESS SPECIFIED OTHERWISE.
 3. FOR EME SIGNS NOTED THUS [X] REFER TO 005486 FOR DETAILS.
 4. [2] EME SIGNS TO BE SECURED BEHIND EACH PANEL ANTENNA.
 5. [4] EME SIGN SECURED 1.5m AGL TO TOWER
 6. [13] EME SIGN SECURED TO EXISTING COMPOUND GATE.
 7. THIS DRAWING SET IS A PRELIMINARY DRAWING ONLY AND IS ISSUED FOR COMMENT. IT IS NOT A DETAILED SURVEY / STRUCTURAL DRAWING AND THEREFORE COULD BE SUBJECT TO CHANGE.

SITE ACCESS

SCALE 1:5000
50m 0 50m 100m 150m 200m 250m SCALE 1:5000

DO NOT SCALE

F

PROPERTY DESCRIPTION

LOCAL GOVERNMENT AREA TAMWORTH REGIONAL
PARISH OF MOONBI COUNTY OF INGLIS
(FORMERLY KNOWN AS PORTION 107) TITLE DIAGRAM
CROWN PLAN 526.1690

SITE STRUCTURE CO-ORDINATES (GDA94)
GPS READING ACCURACY: ± 10m
CENTRE OF POLE

LATITUDE	GDA 94 -31.019367
LONGITUDE	GDA 94 150.967422

ServiceStream

Level 7, 25 Smith Street, Parramatta, NSW 2150
T +61 3 9677 8888 | www.servicestream.com.au

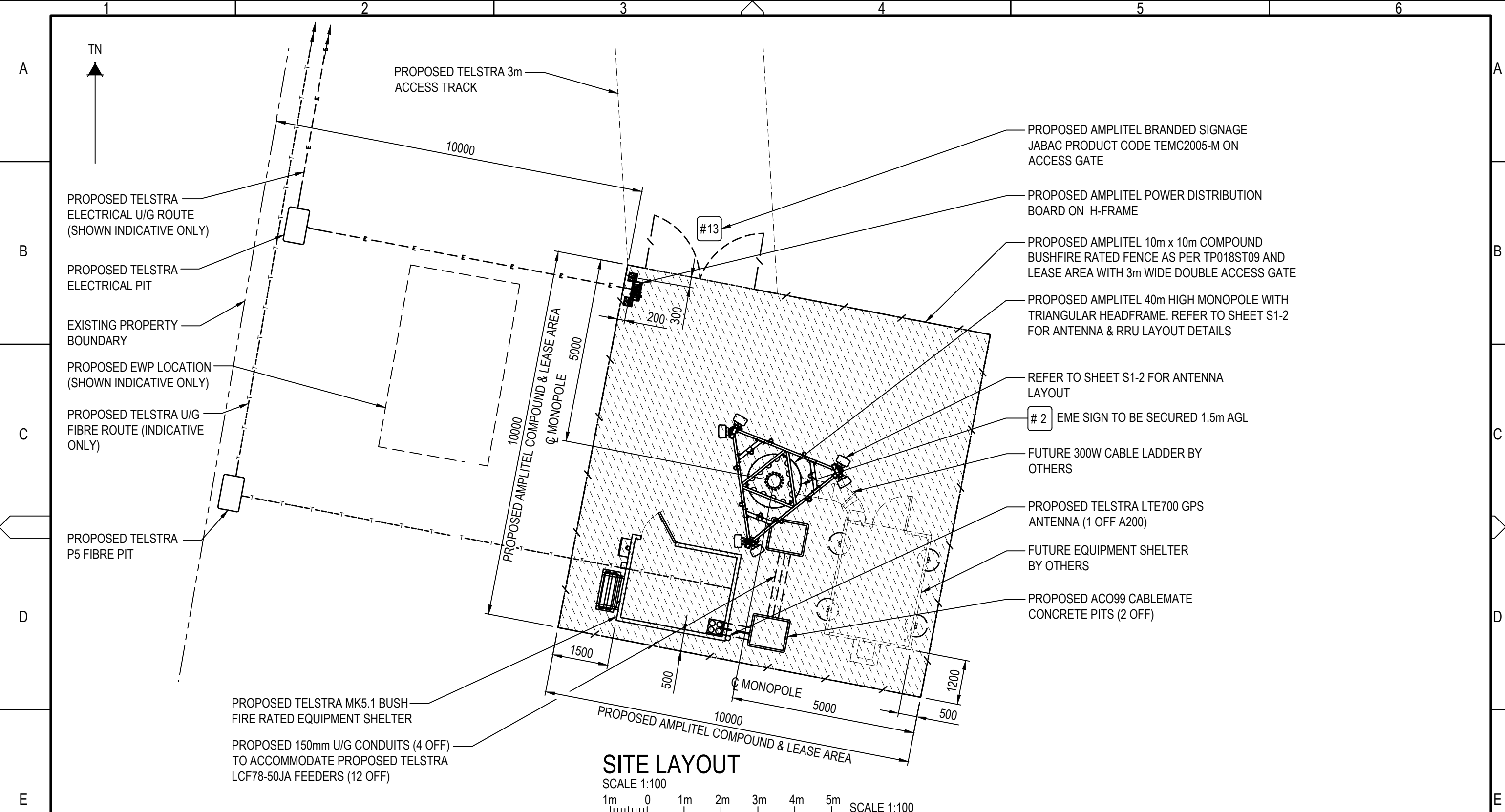
ORDER	DRAWN	CHKD	AMENDMENT	EXAM	APPD	DATE	ISS
NA25170.02	SS	TM	PRELIMINARY - 30104197W017SSNC - (L7+5G.85+L850)	AM	AG	29.08.24	1
© Amplitel PTY LTD as Trustee for the Towers Business Operating Trust (ABN 75 357 171 746) All rights reserved.							

PRELIMINARY



TOWER AMS ID NSW100629
DARUKA
SITE ACCESS AND LOCALITY PLAN
30 CONDOWNIE RD, DARUKA, NSW 2340

DWG NO.	NSW100629	SHT NO.	S1
---------	-----------	---------	----

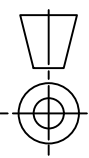


NOTES:

1. ALL FEEDER ACCESS POINTS ON THE STRUCTURE MUST BE BIRD PROOFED AS PER EXTERNAL PLANT POLICY 003615.
 2. ALL DIMENSIONS ARE IN MILLIMETRES UNLESS SPECIFIED OTHERWISE.
 3. FOR EME SIGNS NOTED THUS [X] REFER TO 005486 FOR DETAILS.
 4. [2] EME SIGNS TO BE SECURED BEHIND EACH PANEL ANTENNA.
 5. [4] EME SIGN SECURED 1.5m AGL TO TOWER.
 6. [13] EME SIGN SECURED TO EXISTING COMPOUND GATE.
 7. THIS DRAWING SET IS A PRELIMINARY DRAWING ONLY AND IS ISSUED FOR COMMENT. IT IS NOT A DETAILED SURVEY / STRUCTURAL DRAWING AND THEREFORE COULD BE SUBJECT TO CHANGE.
- ☒ PROPOSED AMPLITEL LEASE AREA

DO NOT
SCALE

F



ServiceStream

Level 7, 25 Smith Street, Parramatta, NSW 2150
T +61 3 9677 8888 | www.servicestream.com.au

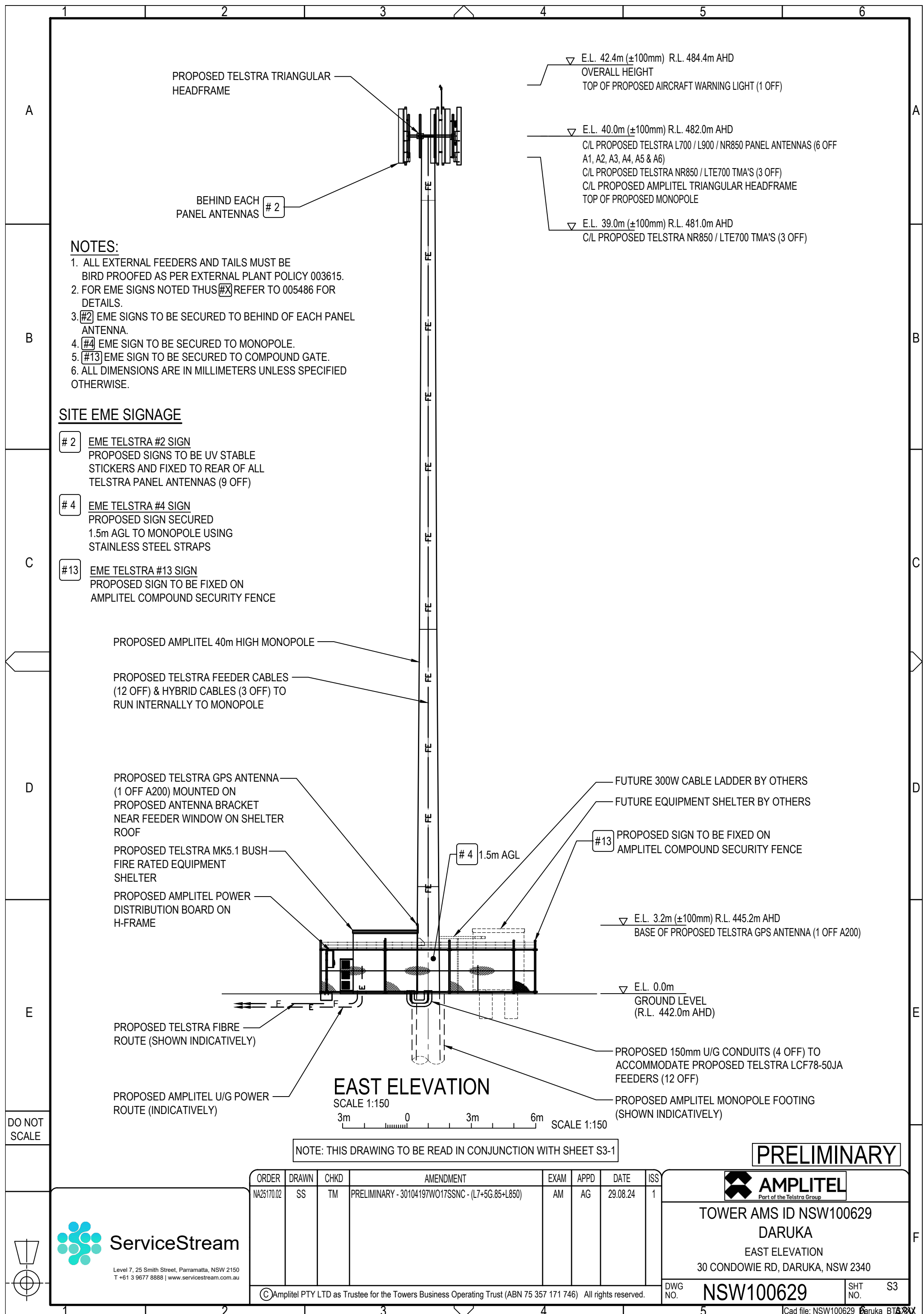
ORDER	DRAWN	CHKD	AMENDMENT	EXAM	APPD	DATE	ISS
NA25170.02	SS	TM	PRELIMINARY - 30104197W017SSNC - (L7+5G.85+L850)	AM	AG	29.08.24	1
© Amplitel PTY LTD as Trustee for the Towers Business Operating Trust (ABN 75 357 171 746) All rights reserved.							

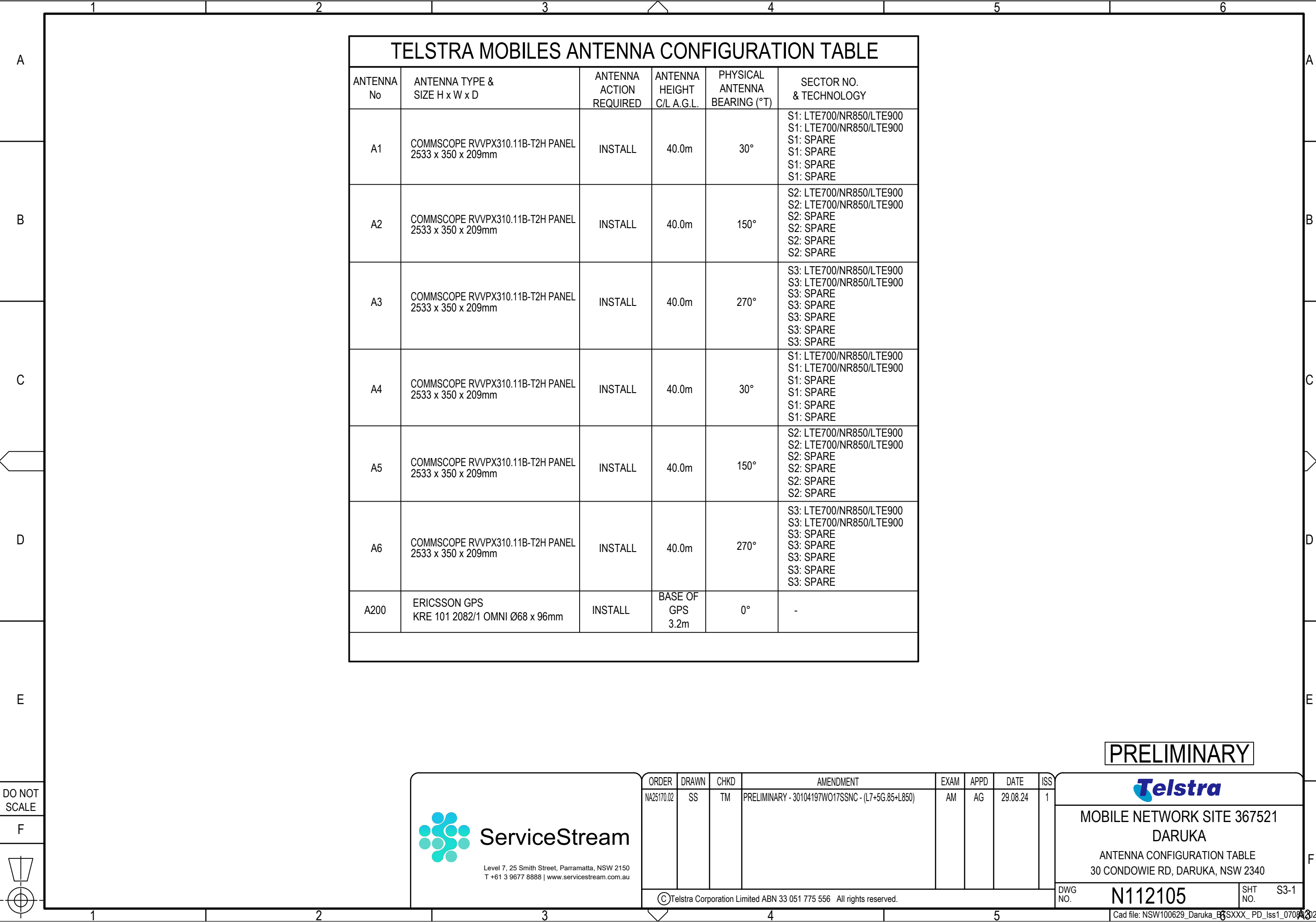
PRELIMINARY



TOWER AMS ID NSW100629
DARUKA
SITE LAYOUT
30 CONDOWIE RD, DARUKA, NSW 2340

DWG NO. N112105 SHT NO. S1-1





TELSTRA MOBILES ANTENNA CONFIGURATION TABLE					
ANTENNA No	ANTENNA TYPE & SIZE H x W x D	ANTENNA ACTION REQUIRED	ANTENNA HEIGHT C/L A.G.L.	PHYSICAL ANTENNA BEARING (°T)	SECTOR NO. & TECHNOLOGY
A1	COMMSCOPE RVVPX310.11B-T2H PANEL 2533 x 350 x 209mm	INSTALL	40.0m	30°	S1: LTE700/NR850/LTE900 S1: LTE700/NR850/LTE900 S1: SPARE S1: SPARE S1: SPARE S1: SPARE
A2	COMMSCOPE RVVPX310.11B-T2H PANEL 2533 x 350 x 209mm	INSTALL	40.0m	150°	S2: LTE700/NR850/LTE900 S2: LTE700/NR850/LTE900 S2: SPARE S2: SPARE S2: SPARE S2: SPARE
A3	COMMSCOPE RVVPX310.11B-T2H PANEL 2533 x 350 x 209mm	INSTALL	40.0m	270°	S3: LTE700/NR850/LTE900 S3: LTE700/NR850/LTE900 S3: SPARE S3: SPARE S3: SPARE S3: SPARE
A4	COMMSCOPE RVVPX310.11B-T2H PANEL 2533 x 350 x 209mm	INSTALL	40.0m	30°	S1: LTE700/NR850/LTE900 S1: LTE700/NR850/LTE900 S1: SPARE S1: SPARE S1: SPARE S1: SPARE
A5	COMMSCOPE RVVPX310.11B-T2H PANEL 2533 x 350 x 209mm	INSTALL	40.0m	150°	S2: LTE700/NR850/LTE900 S2: LTE700/NR850/LTE900 S2: SPARE S2: SPARE S2: SPARE S2: SPARE
A6	COMMSCOPE RVVPX310.11B-T2H PANEL 2533 x 350 x 209mm	INSTALL	40.0m	270°	S3: LTE700/NR850/LTE900 S3: LTE700/NR850/LTE900 S3: SPARE S3: SPARE S3: SPARE S3: SPARE
A200	ERICSSON GPS KRE 101 2082/1 OMNI Ø68 x 96mm	INSTALL	BASE OF GPS 3.2m	0°	-

PRELIMINARY

DO NOT SCALE

F

ServiceStream

Level 7, 25 Smith Street, Parramatta, NSW 2150
T +61 3 9677 8888 | www.servicestream.com.au

ORDER	DRAWN	CHKD	AMENDMENT	EXAM	APPD	DATE	ISS
NA25170.02	SS	TM	PRELIMINARY - 30104197W017SSNC - (L7+5G.85+L850)	AM	AG	29.08.24	1

©Telstra Corporation Limited ABN 33 051 775 556 All rights reserved.

MOBILE NETWORK SITE 367521
DARUKA

ANTENNA CONFIGURATION TABLE
30 CONDOWIE RD, DARUKA, NSW 2340

DWG NO.

N112105

SHT NO.

S3-1

Cad file: NSW100629_Daruka_B6SXXX_PD_Iss1_07092024